



## **Health Scrutiny Committee**

Date: Tuesday, 3 November 2020  
Time: 2.00 pm  
Venue: Virtual Meeting - Webcast at -  
[https://manchester.public-i.tv/core/portal/webcast\\_interactive/485360](https://manchester.public-i.tv/core/portal/webcast_interactive/485360)

This is a **Second Supplementary Agenda** containing additional information about the business of the meeting that was not available when the agenda was published

### **Advice to the Public**

The Local Authorities and Police and Crime Panels (Coronavirus) (Flexibility of Local Authority and Police and Crime Panel Meetings) (England and Wales) Regulations 2020

Under the provisions of these regulations the location where a meeting is held can include reference to more than one place including electronic, digital or virtual locations such as internet locations, web addresses or conference call telephone numbers.

To attend this meeting it can be watched live as a webcast. The recording of the webcast will also be available for viewing after the meeting has concluded.

## **Membership of the Health Scrutiny Committee**

**Councillors** - Farrell (Chair), Nasrin Ali, Clay, Curley, Doswell, Hitchen, Holt, Mary Monaghan, Newman, O'Neil, Riasat and Wills

## Supplementary Agenda

---

**5. COVID19 Update**

5 - 22

Report of the Director of Public Health

In October the Committee received the latest version of the Manchester 12 Point COVID-19 Action Plan. This report provides a brief update on some aspects of the Plan. In relation to Point 1 of the Plan (Data and Intelligence) the DPH will provide a presentation to the Committee on the latest available information.

Appended to this report is a copy of the presentation that will be delivered by the Director of Public Health at the meeting.

## Further Information

---

For help, advice and information about this meeting please contact the Committee Officer:

Lee Walker  
Tel: 0161 234 3376  
Email: [l.walker@manchester.gov.uk](mailto:l.walker@manchester.gov.uk)

This supplementary agenda was issued on **Friday, 30 October 2020** by the Governance and Scrutiny Support Unit, Manchester City Council, Level 3, Town Hall Extension (Lloyd Street Elevation), Manchester M60 2LA

This page is intentionally left blank

## Manchester City Council Report for Information

**Report to:** Health Scrutiny Committee – 3 November 2020

**Subject:** COVID-19 Update

**Report of:** Director of Public Health

### Summary

In October the Committee received the latest version of the Manchester 12 Point COVID-19 Action Plan. This report provides a brief update on some aspects of the Plan. In relation to Point 1 of the Plan (Data and Intelligence) the Director of Public Health will provide a presentation to the Committee on the latest available information.

### Recommendations

The Committee are asked to note the report.

### Wards Affected: All

<b>Environmental Impact Assessment</b> - the impact of the issues addressed in this report on achieving the zero-carbon target for the city	
<b>Manchester Strategy outcomes</b>	<b>Summary of how this report aligns to the OMS</b>
A thriving and sustainable city: supporting a diverse and distinctive economy that creates jobs and opportunities	This unprecedented national and international crisis impacts on all areas of our city. The 'Our Manchester' approach has underpinned the planning and delivery of our response, working in partnership and identifying innovative ways to continue to deliver services and to establish new services as quickly as possible to support the most vulnerable in our city
A highly skilled city: world class and home grown talent sustaining the city's economic success	
A progressive and equitable city: making a positive contribution by unlocking the potential of our communities	
A liveable and low carbon city: a destination of choice to live, visit, work	
A connected city: world class infrastructure and connectivity to	

drive growth	
--------------	--

**Contact Officers:**

Name: David Regan  
 Position: Director of Public Health  
 E-mail: d.regan@manchester.gov.uk

**Background documents (available for public inspection):**

The following documents disclose important facts on which the report is based and have been relied upon in preparing the report. Copies of the background documents are available up to 4 years after the date of the meeting. If you would like a copy please contact one of the contact officers above.

Local Prevention and Response (Outbreak) Plan, Manchester Health Scrutiny Committee, 21 July 2020

Manchester's 12 Point COVID-19 Action Plan, Manchester Health Scrutiny Committee, 6 October 2020

## 1. Introduction

In the 7 days up to and including Sunday 25<sup>th</sup> October, there were 2,784 new cases of COVID-19 in Manchester residents. This is equivalent to a rate of 503.2 per 100,000. There was gradual decline in the rate of new cases in the period between 3<sup>rd</sup> and 16<sup>th</sup> October but since that date, the rate has begun to rise. The DPH will present an analysis of age specific rates over the course of the pandemic to the Committee. A summary of the age specific weekly data set up to and including Saturday 24<sup>th</sup> October is provided below:

<b><u>Table One-Age specific weekly rates 24/10/2020</u></b>			
	<u>Cases</u>	<u>% cases</u>	<u>Rate</u>
Pre-school (0-4 years)	64	2.3%	172.5
Primary school (5-11 years)	126	4.6%	251.5
Secondary school (12-16 years)	176	6.4%	582.3
Higher education (17-21 years)	238	8.6%	463.0
Working age (22-64 years)	1,961	70.8%	589.7
Older people (65+ years)	203	7.3%	394.6

This brief update covers testing (point 2), outbreaks and contact tracing (point 3), community engagement (point 4), compliance and enforcement (point 5), work with the universities (point 6) and work with care homes (point 7).

## 2. Testing

The Armitage Centre, Fallowfield has been approved to proceed as a fixed Local Testing Site (LTS) and until this is operational a Mobile Testing Unit will be deployed to provide access to testing for both residents and students. In addition a further three LTSs are at the final planning stage.

## 3. Outbreaks and Contact Tracing

In the period covering Friday 16<sup>th</sup> October to Friday 23<sup>rd</sup> October the Manchester Test and Trace Service dealt with cases in 151 different settings (an increase from 134 different settings in the previous week).

42% of settings were early years and school settings, 29% were social care settings, 8% were hospitality settings, 5% in Higher Education and University settings, 5% were business and office settings, and the rest were in retail (4%) manufacturing and warehouse settings (3%), health (3%), and transport (1%).

### Locally enhanced contact tracing

The data below shows the index cases (local residents who had tested positive) who the National Test and Trace system had not been able to speak to within the first 24 hours that were sent Manchester service to manage.

Period	Number of cases handled	% cases successfully contact traced
4 - 10 September	76	39%
11 - 17 September	169	73%
18 - 21 September	324	71%
25 September - 1 October	107	92%
2 - 8 October	196	77%
9 - 15 October	502	54%
16 – 22 October	544	66%

The service is currently dealing with much higher volume of referrals than the initial modelling projected and the additional resource that Greater Manchester will receive under the Tier 3 restrictions is urgently required. As an interim solution Manchester is piloting a collaborative approach with the Greater Manchester Fire and Rescue Service, who have capacity to trace 10 cases a day in the first instance, beginning the week commencing 26 October 2020.

#### **4. Community Engagement**

Enhanced community engagement activity continues in a number of areas across the city where the rates have been high over the past three months. This activity includes door knocking, having conversations with residents and businesses about the importance of following preventative measures.

In addition the COVID Health Equity Group has initiated work with different community groups based on the evidence from the first wave that highlighted inequalities in health outcomes.

#### **5. Compliance and Enforcement**

Licensing and Out of Hours staff continue to visit Licensed Premises across the whole city to advise on the changes to the regulations and reinforce messages around closing times, requirements to collect contact information and the need to avoid household mixing. Joint operations have been undertaken over recent weekends both day and night with GMP colleagues to ensure the requirements are being implemented and complied with in hospitality venues

Environmental Health is continuing to focus on responding to workplace issues of non-compliance in non-licensed premises including retail, barbers/hairdressers and other workplaces to ensure they are aware of requirements.



## **6. Work with the Universities**

There is clear evidence of a significant downward trend in the number of positive cases amongst students reported by both universities and validated by Public Health England (PHE) and the Manchester Public Health Team. The three Outbreak Control Team meetings relating to specific accommodation blocks/facilities in the City have now been stood down and the PHE field epidemiology reports reflect the successful management of these outbreaks.

However following a formal review process agreed with the Universities on 23<sup>rd</sup> October and supported by PHE, the Director of Public Health has recommended that the existing control measures will remain in place. This will mean that the majority of courses will remain online although the universities can progress an increase in the percentage of provision that can be delivered in a blended model. As is now the case, appropriate risk assessments for individual staff and students must be adhered to.

## **7. Work with Care Homes**

Learning for the first wave the Manchester Care Homes Board, chaired by the Executive Director of Adult Social Services (DASS) is collating information to provide assurance to the Department of Health and Social Care on the readiness for winter and the second wave. In addition the Board will track key indicators such as:

- Care homes with outbreaks
- Current care home resident data (% who have Covid and those isolating)
- Current care home staffing data (% who have Covid and those isolating)
- Current care home bed capacity information
- PPE supply and adherence

The Board will also ensure information relating to Home Care and other settings such as Extra Care and Learning Disability facilities is collected to inform a targeted and supportive approach.

The DASS and DPH will provide a comprehensive update to the December Committee.

This page is intentionally left blank

# Understanding the Changing Age Distribution of Cases of COVID-19 in Manchester

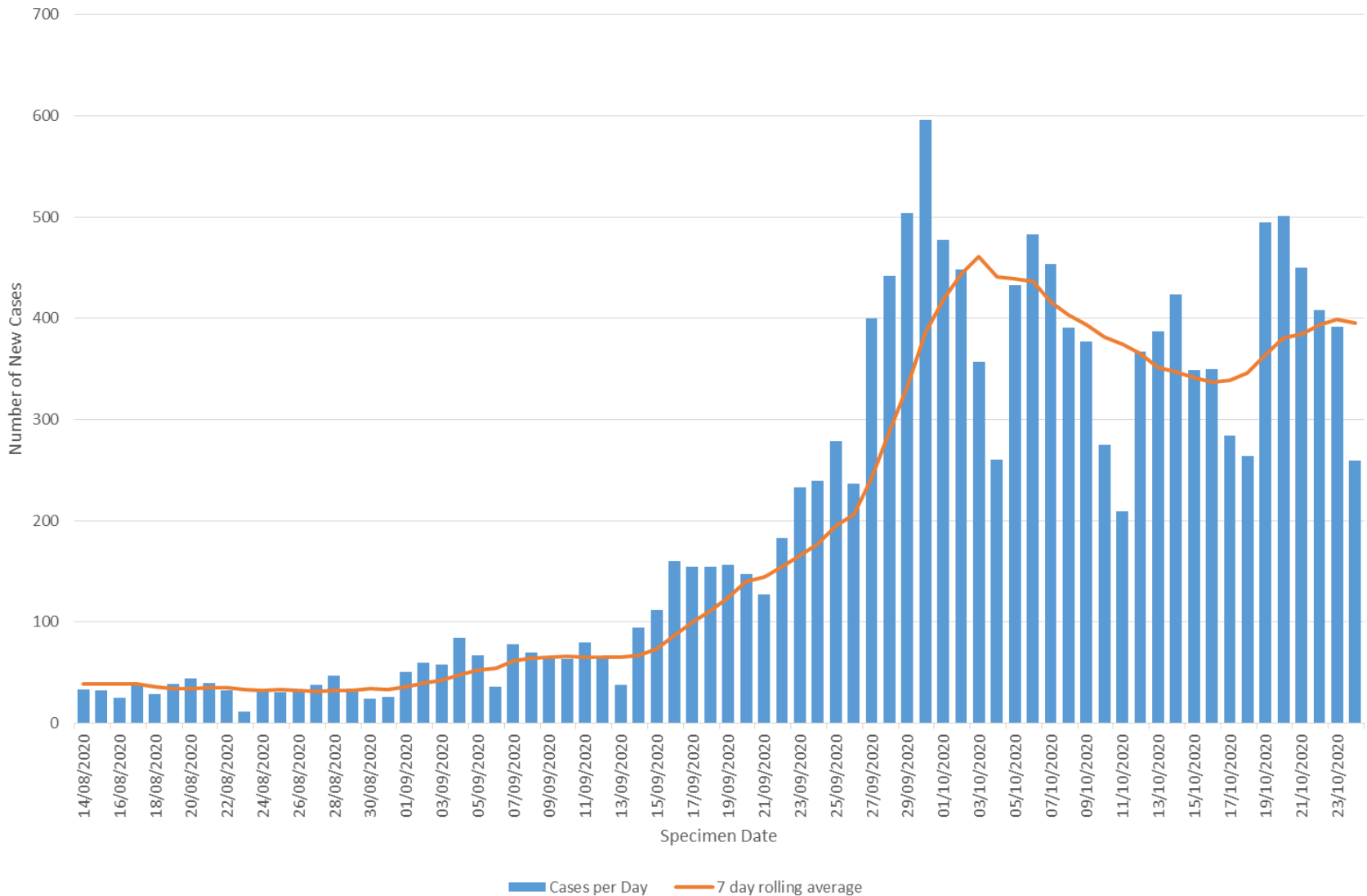
Neil Bendel  
David Regan

Manchester Public Health Team  
Manchester Health Scrutiny Committee  
Tuesday 3<sup>rd</sup> November 2020

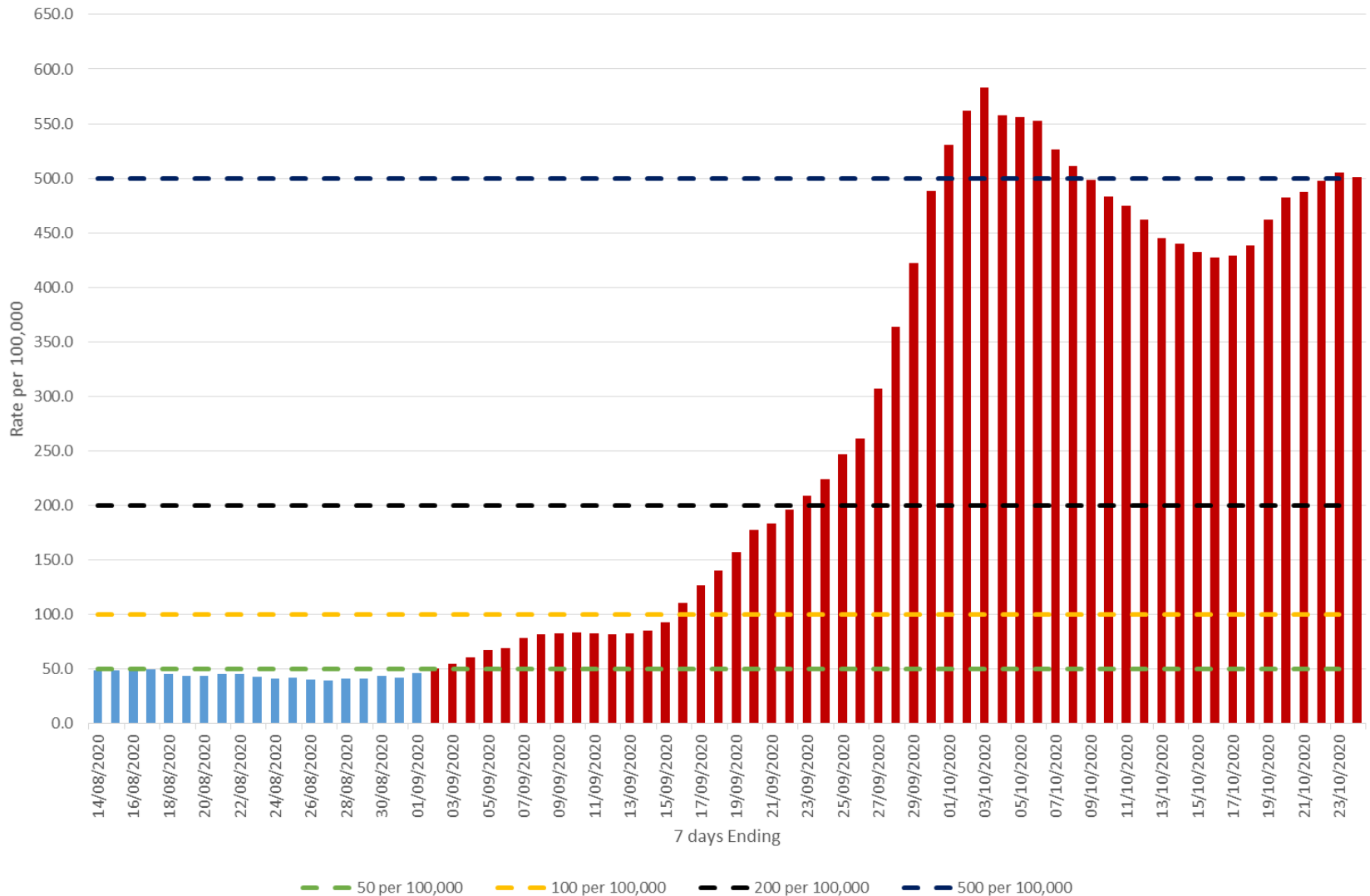
# Key messages

- A focus on the overall rate of COVID-19 (all ages) may mask changes in the age distribution of new cases of the virus within the population
- Steep increases in the rate between middle of September and beginning of October were largely driven by a rise in the number of cases in higher education age group (17-21 years) linked to outbreaks in student accommodation settings
- As the number of cases in 17-21 year olds fall, increases in other age groups are becoming more visible
- Recent data highlights increase in cases in secondary school age children (12-16 years), mid-late working age (40-49 and 50-64 years) and older people (60 years and over)
- The expansion in the availability of testing in early May means that it can be difficult to compare the patterns of infection in the 1<sup>st</sup> and 2<sup>nd</sup> waves of the pandemic

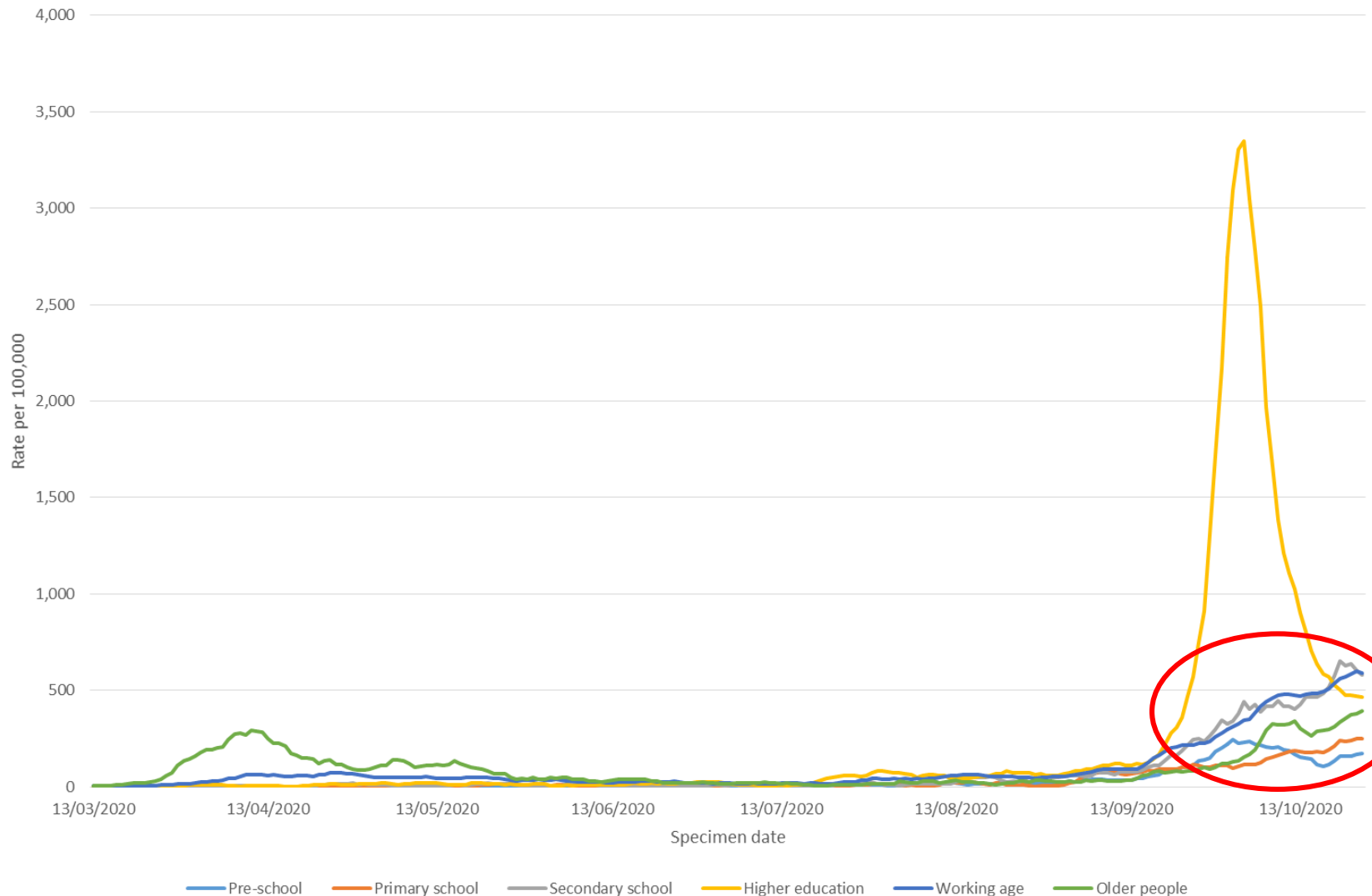
Average daily number of new cases of COVID-19 rose rapidly in last two weeks of September reaching a peak on 3 October. Numbers have subsequently fallen but there is no evidence of a drop to levels seen in early September.



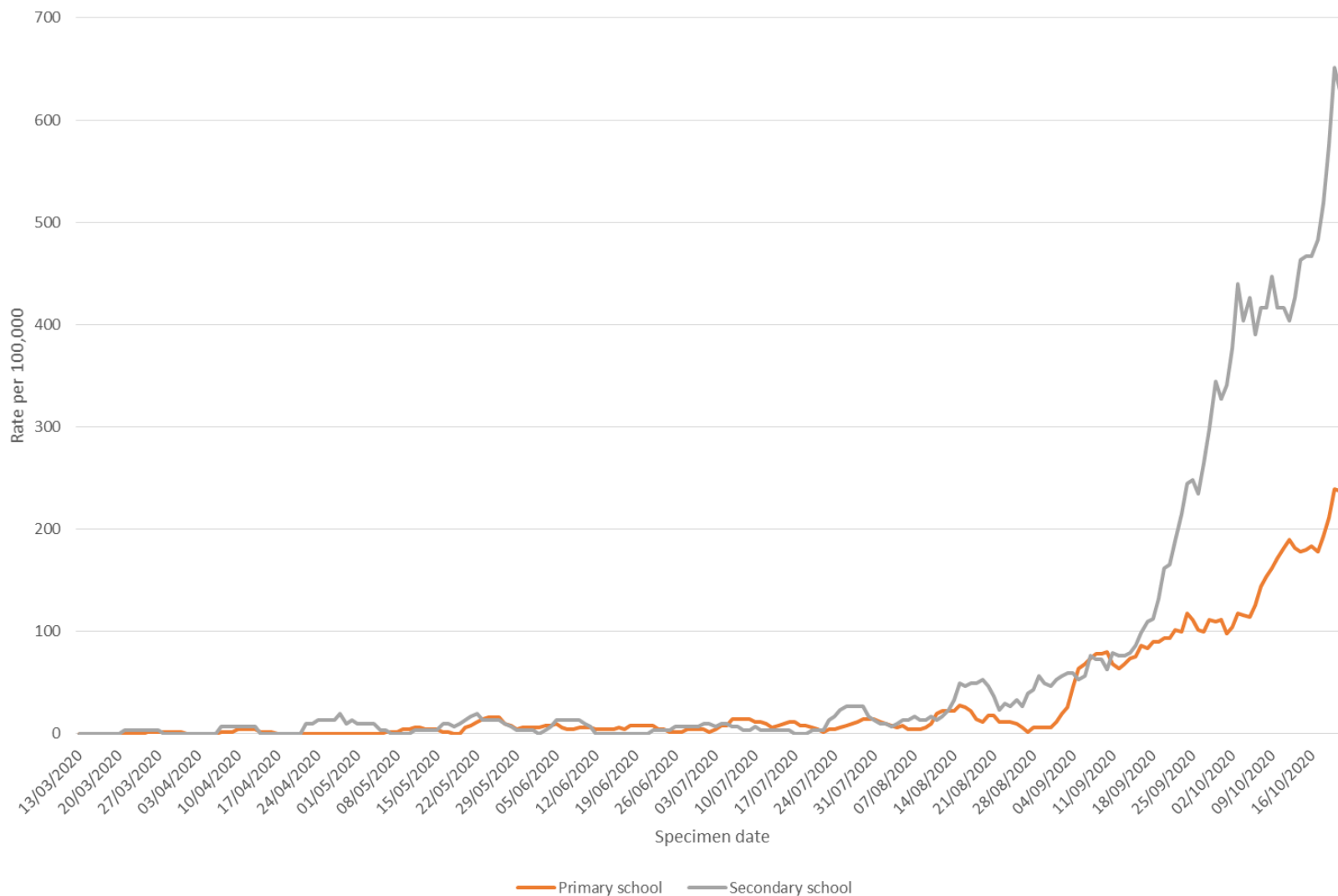
Rate of new cases of COVID-19 in Manchester peaked at 583.2 per 100,000 on 3 October.  
Rate has subsequently fallen but has begun to climb upwards again.



An abnormally high but short lived peak of cases in young people aged 17-21 has been a key feature of the developing second wave of the pandemic. However, there is evidence of a rise in the rate of cases in other age groups in recent weeks

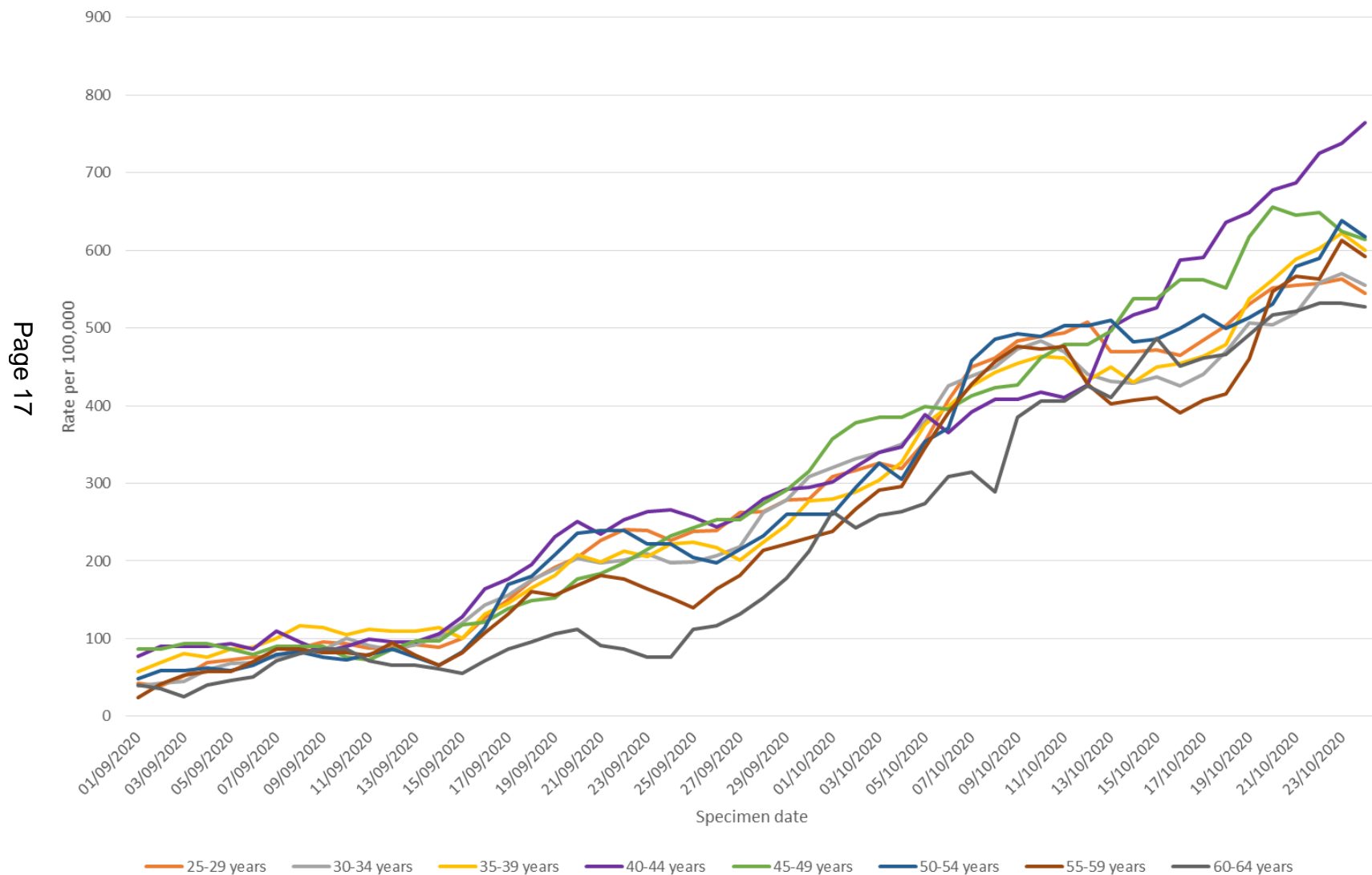


The rate of new cases of COVID-19 has increased in both primary and secondary school age children but the rate of increase has been faster in secondary school age children

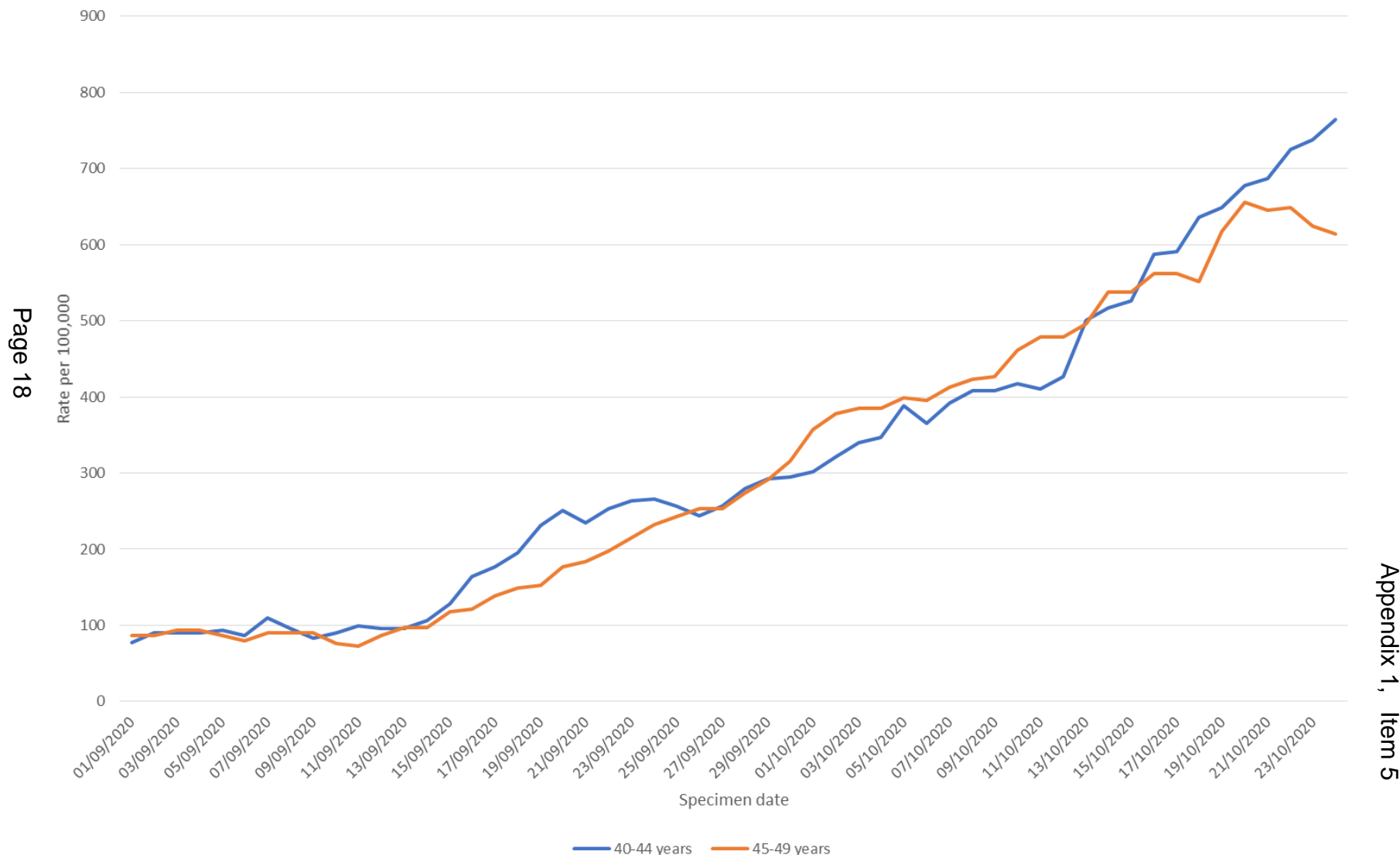




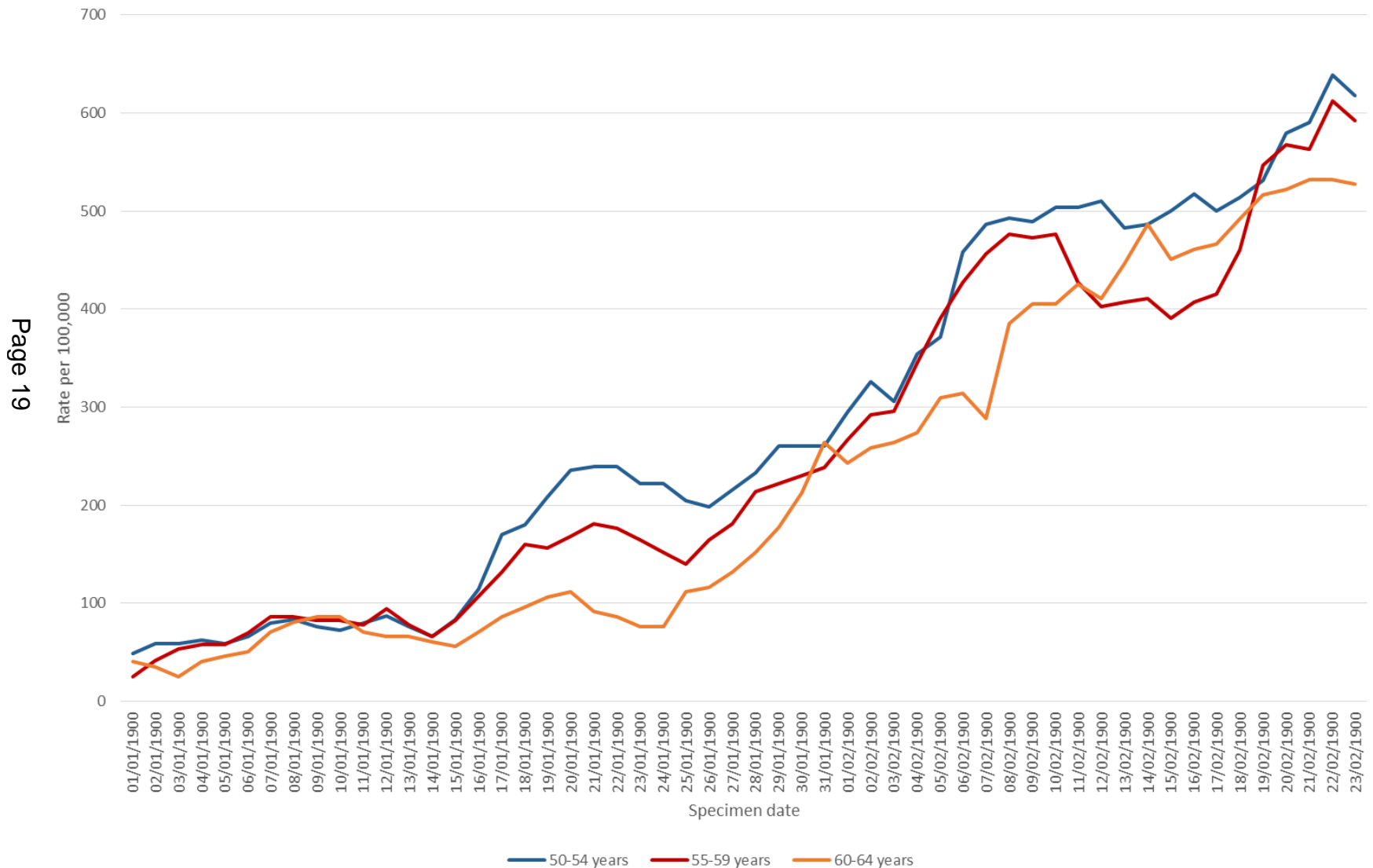
The rate of new cases of COVID-19 has increased in each of the 5 year age bands within the working age population of Manchester (25-64 years) over the period since the middle of September



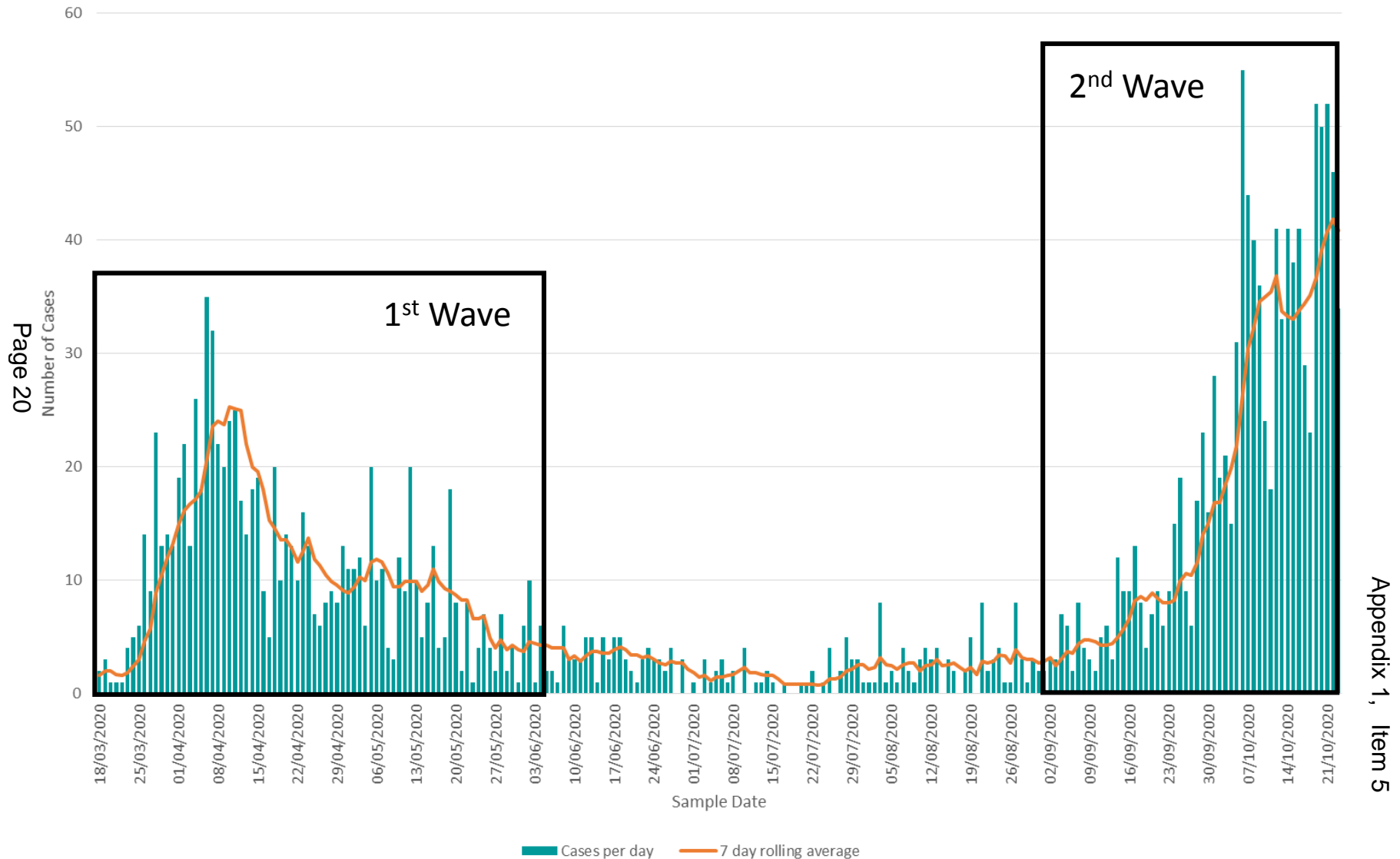
The rate of new cases of COVID-19 in adults of mid-working age in Manchester (40-44 and 45-49 years) is around 4 times higher than it was in the middle of September



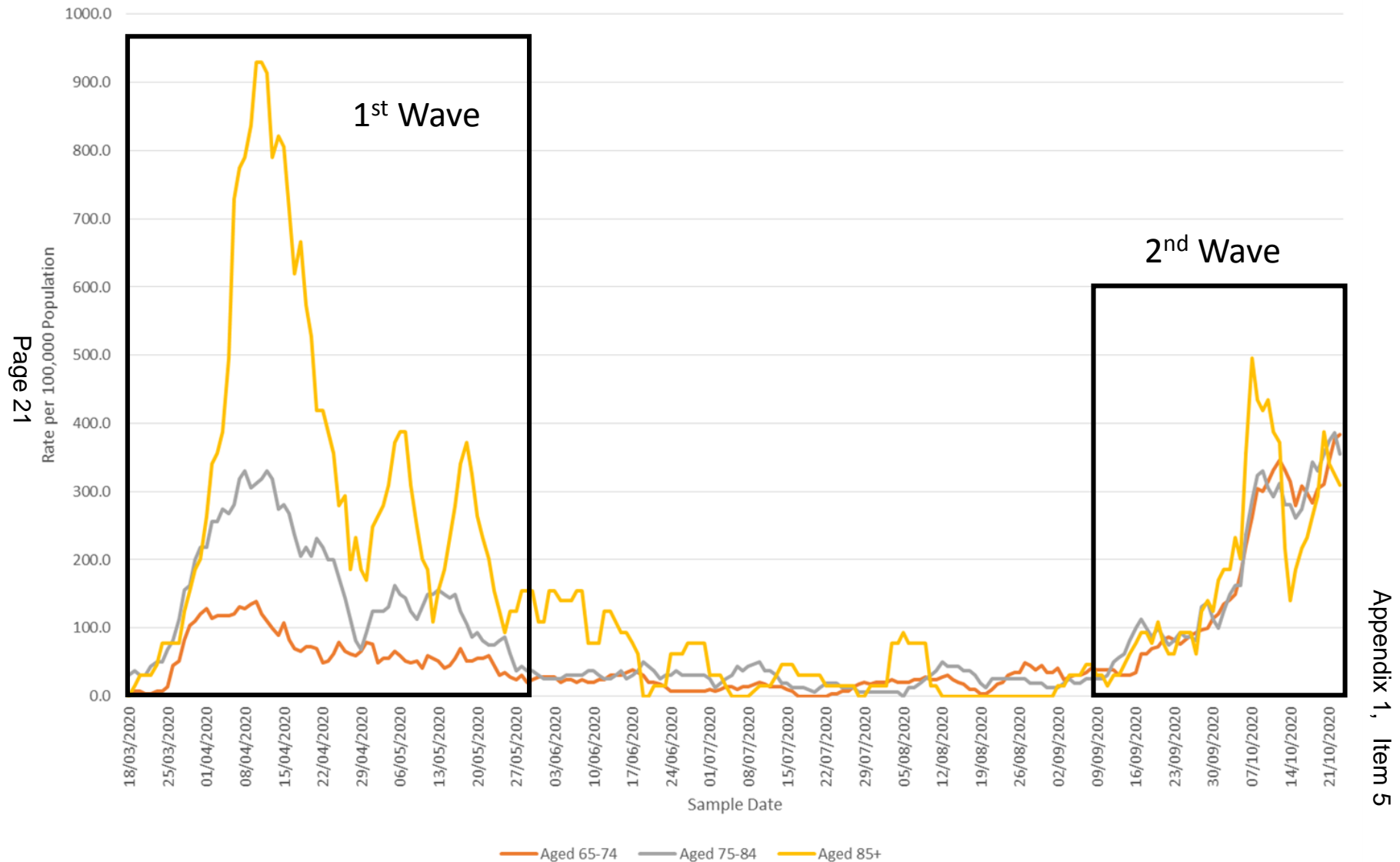
The rate of new cases of COVID-19 in adults of older working age has also increased since the middle of September, particularly in adults aged 50-54 and 55-59 years



The daily number of new cases in people aged 60 and over is now significantly higher than it was in the first wave of the pandemic



Noticeably higher rates of new cases in oldest cohort of older people (aged 85+) in first wave linked (in part) to higher rates of testing in nursing and residential care settings.



Heat maps of age-specific case rates per 100,000 population show the movement of COVID-19 infection over time across different age groups within the population (Manchester “heat map” below, maps have been produced for every LA by Public Health England)

